

TT 520

F77

1890

APR 28 1890
55291
TT 520
. F77
1890
Copy 1

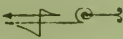
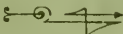
TT 520
. F77
1890
Copy 1

INSTRUCTIONS

— FOR USING —

FOUNTAIN'S Tailor System of Dress Cutting

WHICH MAKES A

Perfect Fit for Ladies and 
Children Without Alteration. 

The System is in Two Pieces only :

A SQUARE AND CURVATURE.

Agents Wanted in Every City and Town in the United States.

ADDRESS

J. H. FOUNTAIN & CO.

621 LOCUST STREET, ST. LOUIS, MO.

FIFTH EDITION.

Entered according to Act of Congress, Feb. 15, in the year 1890, by J. H. FOUNTAIN,
in the office of the Librarian, at Washington, D. C.

Twenty-eight Silver Medals.

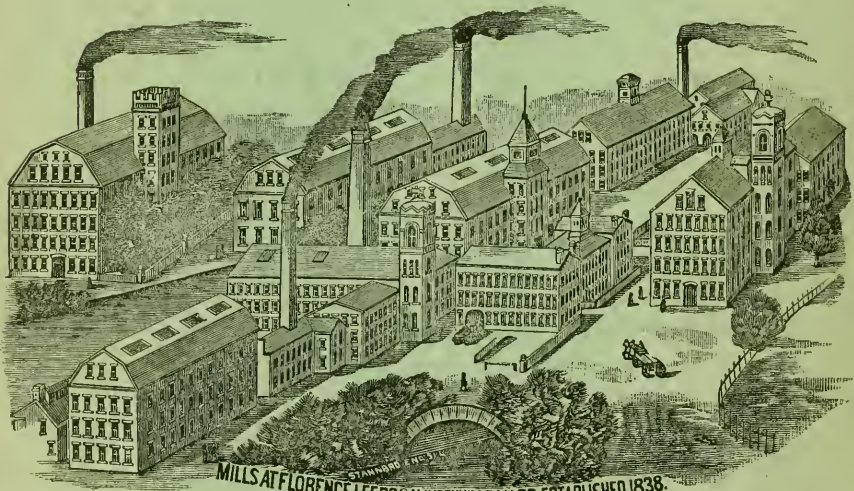
Fourteen Gold Medals.

52 YEARS AGO The CORTICELLI Silk

MILLS WERE FOUNDED.

THE OLDEST AND GREATEST SYSTEM

OF ITS KIND IN THE WORLD.



MILLS AT FLORENCE LEEDS & HAYDEVILLE, MASS. ESTABLISHED 1838.

CORTICELLI SILK MILLS. The Greatest Silk Thread Works in the World.
NONOTUCK SILK CO.

Mills at Florence, Leeds and Haydenville, Mass., and St. John's, Canada.

CORTICELLI SPOOL SILK

Is the smoothest, strongest and the best Silk Thread in the World.

Corticelli Knitting & Embroidery Silk—Wash Colors.

ACME OF PERFECTION.

USE ONLY CORTICELLI.

C. H. SAMPSON, Agent.

◀ P R E F A C E ▶

THOSE who have given the subject of garment cutting any thought, will agree with us in saying that thus far there has been great room for improvement. There have been many Charts and Models, and a few so-called systems published, and the public has been imposed upon by unskilled persons merely for their own pecuniary interest, as they had not the skill to perfect a Scientific "System of Dress Cutting." There is nothing finer than garment cutting; it is a science, and scientific principles must be applied or we fail. Mr. Fountain's, the inventor, greatest object was to perfect a system that would not only rival all others, but an absolutely perfect one that would stand before the world without criticism.

With the hearty approval of our former patrons, we now place before the public our new No. 3 System, with the fifth edition of our Instruction Book, and ask a careful and thorough investigation. The first, second, third and fourth editions, with the No. 1 and 2 Systems, was, as thousands will say, a grand success, but it will be easy to see improvements. Our Tailor Cut is artistic and beautiful, and is becoming very popular; our Children Cuts are simple and accurate, and all that anyone could wish. We wish to urge upon our patrons the necessity of perfecting themselves in the use of our System; they should study to improve, and never feel satisfied until they can cut a perfect fitting dress without alterations, then they will not try to make improvements on perfect System.

Very respectfully,

J. H. FOUNTAIN & CO.

621 Locust Street

TT520
F 77
1890

FOR FAMILY MEASURES.

NAME.....	NAME.....
Bust.....	Bust.....
Waist.....	Waist.....
Neck.....	Neck.....
Arm's Eye.....	Arm's Eye.....
Shoulder.....	Shoulder.....
Back.....	Back.....
Front.....	Front.....
Under Arm.....	Under Arm.....
Hip.....	Hip.....
Arm to Elbow.....	Arm to Elbow.....
Arm.....	Arm.....
Elbow.....	Elbow.....
Hand.....	Hand.....
F. Skirt.....	F. Skirt.....
B. Skirt.....	B. Skirt.....

NAME.....	NAME.....
Bust.....	Bust.....
Waist.....	Waist.....
Neck.....	Neck.....
Arm's Eye.....	Arm's Eye.....
Shoulder.....	Shoulder.....
Back.....	Back.....
Front.....	Front.....
Under Arm.....	Under Arm.....
Hip.....	Hip.....
Arm to Elbow.....	Arm to Elbow.....
Arm.....	Arm.....
Elbow.....	Elbow.....
Hand.....	Hand.....
F. Skirt.....	F. Skirt.....
B. Skirt.....	B. Skirt.....

DH 10-3283 Unfold

TAKING MEASURE.

You cannot be too careful, as a great deal depends on the measure. You can never cut dresses with perfect results, until you can take measure correctly, which is very easily done, but you must not be in a hurry while taking measure—we do good work only when we are careful. Have the person you are measuring to stand in an easy, natural position, or you cannot take a correct measure. Before commencing to take the measure (if you have no measure book) write the words "Bust," "Waist," "Neck," and so on, in rotation as measurements are taken.

1. First, with tape line measure around the fullest part of bust, take up the slack, hold line between thumb and finger at the back while the person being measured draws the line all they can by expanding their lungs.

2. Take "Waist Measure" tight.

3. Take "Neck Measure" smoothly above collar.

4. Take "Arm's Eye Measure" very tight just below the point of shoulder. If taken correctly, it will always be from a half to one and a half inches smaller than the neck.

5. Take "Shoulder Measure" from a little back of the full part of neck to point of shoulder. A medium shoulder is six inches.

6. Tie a cord around the waist tight, and push it down as low as it will go, except in the front, which will naturally go to the right place.

7. Take "Back Measure" from the prominent bone in back of neck to bottom of cord.

8. Take "Front Measure" from prominent bone in back of neck around to bottom of cord in front.

9. Take "Under Arm Measure" from under arm down to bottom of cord, hold tape between thumb and finger and keep hand on a level while pushing tape up under the arm.

10. Take "Hip Measure" around the hips six inches below waist cord, just as you wish skirt to fit.

11. Take "Arm to Elbow Measure" from point of shoulder to elbow while arm is bent to front waist.

12. With arm still in this position, take "Arm Measure" from point of shoulder to wrist, or length you wish sleeve.

13. Take "Elbow Measure" as you wish sleeve to fit at elbow.

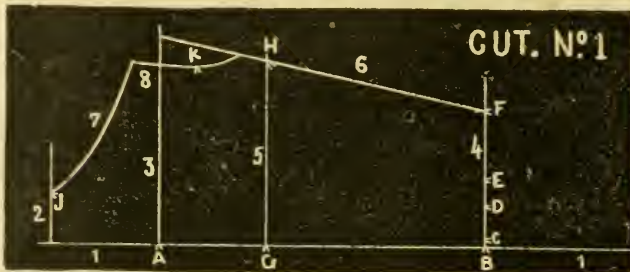
14. Take "Hand Measure" closely around largest part of hand.

15. Take "Front Skirt Measure" from waist cord down the length you wish skirt.

16. Take "Back Skirt Measure" from waist cord down the length you wish skirt in the back.

CHILDRENS' MEASURE.

Take children's measure same as adults, except Bust and Waist, which must be taken very loose, just as you wish garment to fit.

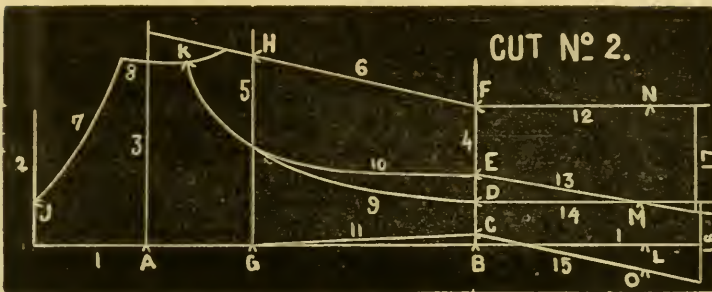


Bust	36
Waist	24
Neck	12
Arm's Eye...11	
Shoulder....	6
Back.....15½	
Front.....18½	
Under Arm...8½	
Hip.....44	
Arm to Elbow	14
Arm	22
Elbow	10½
Hand	8
Front Skirt..	38
Back Skirt..	30

✍ Beginners should by all means learn to draft from the above measure.

DRAFTING BACK—Cut No 1.

1. Draw line No. 1 one and a half inches from edge of paper.
2. Draw line 2 from the top of line 1 square across paper.
3. Make dot A, on line 1, four inches below line 2.
4. Draw line 3 from dot A square across paper.
5. Make dot B, on line 1, the "Back Measure" below line 2.
6. With small end up, draw line 4 from dot B square across paper.
7. Make dot C, on line 4, half of an inch from dot B.
8. Make dot D, on line 4, one and three fourth inches from dot B.
9. Make dot E, on line 4, three inches from dot B.
10. Make dot F, on line 4, according to "Waist Measure," using back waist figure. (When "Waist Measure" is less than twenty-one make dot F at twenty-one.)
11. Make dot G, on line 1, the "Under Arm Measure" above dot B.
12. Draw line 5 from dot G square across paper.
13. Place the curved edge on line 5, small end from you, and make dot H, on line 5, according to "Bust Measure," using back bust figure.
14. Draw line 6 from line 3 across dot H to dot F.
15. With Curvatures, small end from you, place the T point at the junction of lines 1 and 2, and make dot J on line 2 according to neck measure, using back neck figures.
16. Place the U point at dot J, and the shoulder measure in back shoulder guide figures on line 3, then draw line 7 from dot J to shoulder measure.
17. With small end up place the "Arm's Eye Measure" in back Arm Shape figures at the lower end of line 7 and the W point on line 6, then draw line 8 from the lower end of line 7 to line 6, then make dot K on line 8 according to "Arm's Eye Measure," using the small figure in same curve.

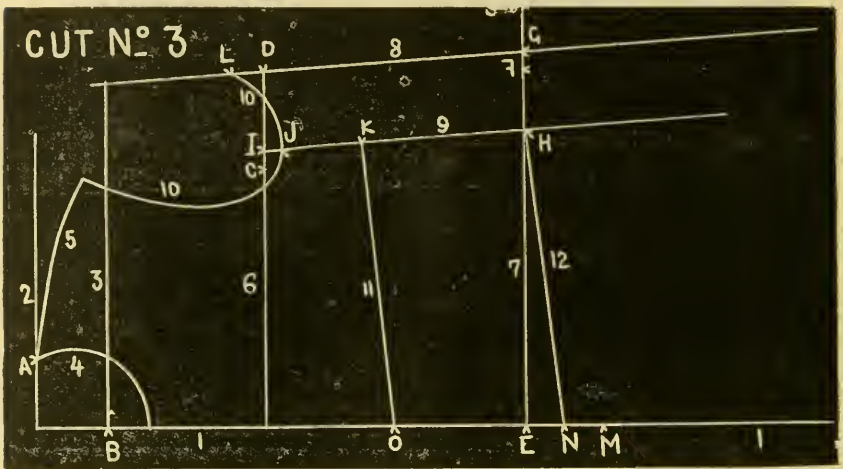


DRAFTING BACK—Cut No. 2.

1. With System, place the K point at dot K and draw curved line 9 from dot K to dot D.
2. Place the F point at the junction of line 5 and 9 and draw curved line 10 to dot E. (Should you wish seam to run to shoulder, make dot K in center of line 7, and draw lines 9 and 10 straight.)
3. Draw line 11 from dot G to dot C.
4. Make dot L on line 1 six inches below dot B.
5. Make dot M one and three fourth inches inside of dot L.
6. Make dot N according to waist measure, using back waist figures.
7. Make dot O half an inch outside of dot L.
8. Draw line 12 from dot F across dot N.
9. Draw line 13 from dot E across dot M.
10. Draw line 14 from dot D across dot M.
11. Draw line 15 from dot C across dot O.

TRACING BACK.

1. Place lining and drafting on table as in tracing front.
2. Trace line 4 from dot C to dot D: from line 4 trace up lines 11 and 1, then line 2 from line 1 to dot J.
3. Then up line 9 to dot K and line 8, from dot K to line 7, and line 7 to dot J.
4. From line 4 down, trace lines 14, 15 and 16.
5. Remove drafting and cut out back, allowing seams everywhere excepting at neck and arm-hole.
6. For "Side Back," replace drafting and trace line 4 from dot E to dot F.
7. Trace up line 6 to line 8, and line 10 to dot K, and line 8 from line 6 to dot K.
8. From waist down, trace lines 12, 13 and 17.
9. Remove drafting and cut out side form, allowing seam everywhere except at arm-hole.



DRAFTING FRONT—Cut No. 3

1. Draw line No. 1 one and a half inches from edge of paper.
2. Draw line 2 from the top of line 1 square across paper.
3. Make dot A on line 2 according to "Neck Measure," using small "Neck Figure" on straight side of system.
4. Make dot B on line 1 two inches below line 2.
5. Draw line 3 from dot B square across the paper.
6. With "Curvatures," place the "Neck Measure" in front, neck figure's on line 1, and the X point in same curve at dot A and draw line 4 from dot A to line 1.
7. Place the V point at dot A, and the "Shoulder Measure" in front shoulder guide figure's on line 3, and draw line 5 from dot A to "Shoulder Measure."
8. Make dot C one-half of "Arm's Eye Measure" below the lowest end of line 5.
9. Draw line 6 from line 1 square out across dot C.
10. Make dot D on line 6, according to "Bust Measure" using front bust figures.
11. Make dot E, on line 1, the "Under Arm Measure" below line 6.
12. Draw line 7 from dot E square across paper.
13. Make dot F on line 7 according to "Bust Measure," using front bust figures.

14. Make dot G half inch outside of dot F.
15. With small end down and square corner at dot G, make dot H on line 7, according to "Arm's Eye Measure," using arm's eye figures.
16. Place the square corner at dot D, and make dot I on line 6 in same manner.
17. Draw line 8 from line 3 across dots D and G, full length of system.
18. Draw line 9 from dot I across dot H, full length of system.
19. Make dot J on line 9 half an inch below dot I.
20. Make dot K on line 9 three inches below dot I.
21. Measure line 6 in back drafting from dot F up to line 8. Now make dot L on line 8 in front drafting the same distance above dot G.
22. Make dot M on line 1 the "Front Measure" below dot A.
23. With "Curvature," small end down, place the "Neck Measure" in back neck figure's at dot M, and make dot N on line 1 at the T point.
24. With small end up, place the "Arm's Eye Measure" in front arm shape at dot J; and draw line 10 from dot L to dot J, and up to the lowest end of line 5. The "Arm's Eye Measure" must be exactly at dot J while drawing line 10.
25. Make dot O on line 1, four inches below line 6.
26. Draw line 11 from dot O to dot K.
27. Draw line 12 from dot N to dot H.

INSTRUCTIONS FOR BASTING.

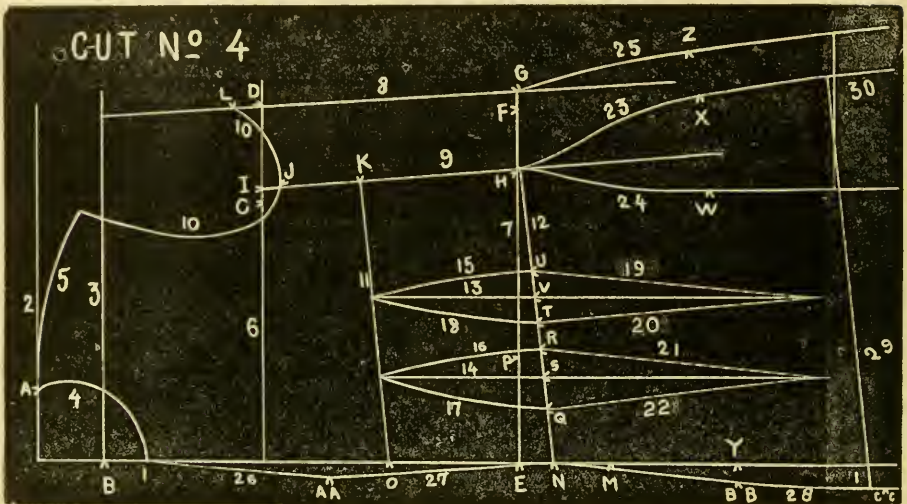
Most ladies believe there is an art in basting—and so there is—but it is very simple, and any lady following our instructions strictly will soon find herself proficient in the art.

First, baste your lining on goods, being careful to hold your lining loosely on goods lengthwise, especially at the waist; at same time be careful not to get lining loose on goods crosswise. In basting darts, run basting full length of lines 13 and 14—this is center of dart and holds lining to goods—fold darts on center and baste and stitch from traced side. This gives your dart full size.

In basting the different pieces of "Waist" together, join them evenly at waist line and baste all seams up from waist, then down, keeping the tracings even on both sides. In basting "Back" and "Front" together, and the side forms in "Back" hold "Back" next to you; also in basting shoulder seams, never allow one side of seam to run out ahead of the other, for pieces that join in seam are of equal length, except front shoulder, which is a little shorter than the back and must be stretched to the exact length of back, and must not be cut off.

BASTING SLEEVE.

Full the linings on the inside of sleeve half an inch, mostly where the arm bends. If the goods is very elastic, full linings three-fourths or an inch; in seaming stretch the inside of sleeve all the goods will bear. Keep the tracing even everywhere; placing sleeve in garment, the tracing from dot A up must be placed at shoulder seam; sleeve should be held a little full over the shoulder in front of shoulder seam.



DRAFTING FRONT—Cut No. 4.

1. With small end of System towards you, measure "Back Drafting" from dot C to dot D (supposing you have one and a fourth inches): then place this one and a fourth inches at dot E and measure to dot F (supposing now you have three and three-fourths inches at dot F); then place this three and three-fourths inches at dot G in "Front Drafting;" and make dot P on line 7 just one-half of "Waist Measure."

2. The distance from dot P to dot E is the amount for darts. Now refer to dart calculation and find the amount for darts in first column; the amount opposite in second column is the amount for front dart; the amount opposite in third column is for the back dart.

3. Make dot Q on line 12 one and three-fourth inches from dot N.

4. Make dot R on line 12 just the size of front dart inside of dot Q.

5. Make dot S half way between dots Q and R.

6. Make dot T three-fourths of an inch from dot R.

7. Make dot U just the size of back dart inside of dot T.

8. Make dot V half way between dots T and U.

9. Draw line 13 from line 11 perfectly square down across dot V. Square line 13 by line 6.

10. Draw line 14 in same manner across dot S.

11. With "Curvatures" place the Y point at the junction of lines 11 and 13, and draw curved line 15 to dot U.

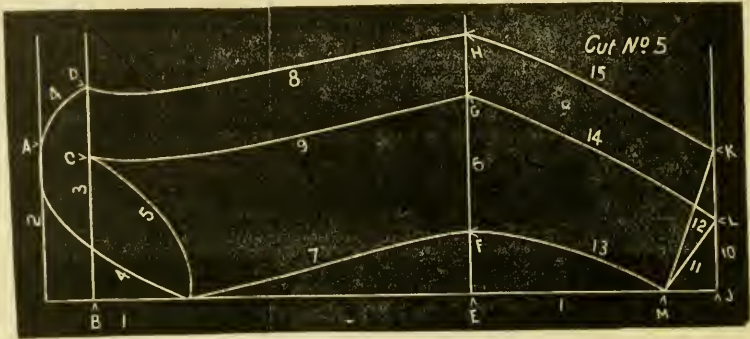
12. Place the Y point at the junction of lines 11 and 14, and draw curved line 16 to dot R.

13. Turn "Curvatures" over face down, and the Y point at the same junction, and draw line 17 to dot Q.

14. Place the Y point at the junction of lines 11 and 13 and draw line 18 to dot T.
15. Make a dot on line 13 nine inches below dot V.
16. Draw line 19 from dot U straight to dot just made.
17. Draw line 20 from dot T to dot just made.
18. Make a dot on line 14 nine inches below dot S.
19. Draw line 21 from dot R to dot just made.
20. Draw line 22 from dot Q in same manner.
21. Make dot W six inches below dot H and one and a half inches from line 9 towards you.
22. Make dot X three and a half inches outside of dot W.
23. Place the A point at dot H, and draw curved line 23 from dot H across dot X.
24. Turn System over, face down, the A point at dot H, and draw curved line 24 from dot H across dot W.
25. Make dot Y on line 1, six inches below dot N.
26. Measure "Back Drafting" from dot O to dot N, (supposing you have six inches), then place this six inches at dot Y in "Front Drafting," with small end of system from you, measure straight across dot X and make dot Z two inches less than half of "Hip Measure;" dot Z must never be less than half of an inch outside of line 8, but more if "Hip Measure" requires it.
27. Place the D point at dot G and draw line 25 across dot Z.
28. Make dot AA half inch outside of line 1 and two inches above dot O.
29. Draw line 26 from the junction of lines 1 and 4 to dot AA.
30. Draw line 27 from dot AA to dot N.
31. Make BB half inch outside of dot Y.
32. Make dot CC one inch outside of line 1, and 10 inches below dot Y.
33. Draw line 28 from dot N across dots BB and CC.

TRACING FRONT.

1. Place lining double on table or Tracing Board, then with front drafting on lining, fasten both secure to table with tacks.
2. Now trace line 12 from line 1 to dot H.
3. Then up lines 9, 10 and 5, and up lines 27, 26 and 4.
4. In tracing darts, trace up lines 13, 14, 17 and 18; this will be one-half of dart.
5. Now trace down from line 12, lines 13, 14, 20, 22, 23, 28 and 29.
6. Remove drafting and cut out the front, allowing seams everywhere except in neck and arm-hole.
7. For "Under Arm Gore," replace drafting on lining as in front.
8. Trace line 7 from dot H to dot G.
9. Then up lines 8 and 9 to line 10, and line 10 from dot J to dot L.
10. Then trace down from line 7, lines 24 and 25 and line 30.
11. Remove drafting, and cut out under arm gore, allowing seams everywhere except at arm-hole.



DRAFTING SLEEVE—Cut No. 5.

1. Draw line 1 half inch from edge of paper.
2. Draw line 2 from top of line 1 square across paper.
3. Make dot A, on line 2, three-fourths of an inch less than half of "Arm's Eye Measure" from line 1.
4. Make dot B on line 1, one and a fourth inches below line 2.
5. Draw line 3 from dot B square across paper.
6. Make dot C on line 3 one inch less than half of "Arm's Eye Measure" from dot B.
7. Make dot D, on line 3, two and a fourth inches outside of dot C.
8. Turn the small end towards you and place the G point at dot D and draw line 4 to dot A.
9. Place the G point at dot A, and the figure that represents "Arm's Eye Measure" in same curve on line 1, and draw line 4 to line 1.
10. Place the G point at the junction of lines 1 and 4, and draw line 5 to dot C.
11. Make dot E, on line 1, "Arm to Elbow Measure," below line 2.
12. Draw line 6 from dot E square across paper.
13. Make dot F, on line 6, two inches from dot E.
14. Make dot G, on line 6, one inch less than half of "Elbow Measure" from dot F.
15. Make dot H two inches outside of dot G.
16. Turn system over. Place the C point at dot F and draw line 7 from the junction of lines 1 and 5 to dot F.
17. With face down, place the D point at dot D, and draw line 8 from dot D to dot H.
18. Place the D point at dot C, and draw line 9 to dot G in same manner.
19. Make dot J, on line 1, "Arm Measure" below line 2.
20. Draw line 10 from dot J square across paper.
21. Make dot K, on line 10, three-fourths of an inch more than half of "Hand Measure" from dot J.
22. Make dot L on line 10 two and a fourth inches inside of dot K. See instructions for Leg 'O Mutton Sleeve, page 18.

23. Make dot M, on line 1, one and a half inches above dot J.
24. Draw line 11 from dot L to dot M.
25. Draw line 12 from dot K to dot M.
26. Place the D point at dot F, and draw line 13 to dot M.
27. Place the D point at dot G, and draw line 14 to dot L.
28. Place the D point at dot H, and draw line 15 to dot K.
29. See instructions for basting sleeve.

DRAFTING LARGE SIZE SLEEVES.

If "Arm Measure" is 23 inches or more, dot F should be made two and a fourth inches from dot E.

DRAFTING SLEEVES FOR CHILDREN.

Draft the same as for adults with the following exceptions :

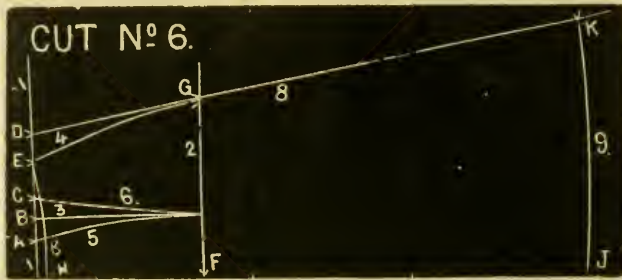
1. Make dot B, on line 1, three-fourths of an inch below line 2.
2. Make dot D one and three-fourth inches outside of dot C.
3. Make dot F one inch from dot E.
4. Make dot G three-fourths of an inch less than half of "Elbow Measure" from dot F.
5. Make dot H one and a half inch outside of dot G.
6. Make dot K half an inch more than half of "Hand Measure" from dot J.
7. Make dot L one and a half inch inside of dot K.
8. Make dot M one inch above dot J.

VARIATIONS IN DRAFTING SLEEVE.

For fleshy arms, take a measure round arm, half way between shoulder and elbow, then straighten lines 8 and 9 until the width of sleeve corresponds with measure ; for extremely large arms lines 8 and 9 may have to be curved the opposite way, and draw lines 14 and 15 from the C point.

TRACING SLEEVE.

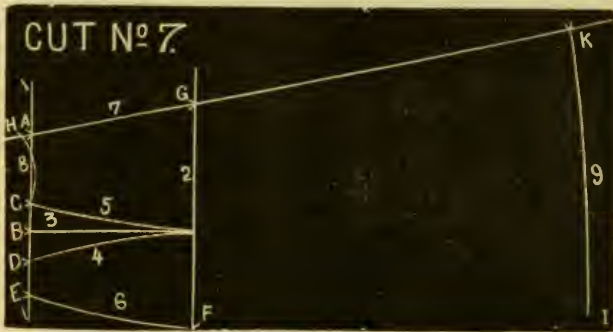
1. Fasten your drafting on lining, as for tracing waist.
2. Trace lines 7, 13, 8 and 15.
3. Trace lines 4 and 12.
4. Trace from dot A up—straight.
5. Remove drafting and cut this, the upper side of sleeve, out ; allow seam everywhere.
6. Replace drafting and trace lines 7, 13, 9 and 14.
7. Trace lines 5 and 11.
8. Remove drafting and cut out under sleeve ; allow seams everywhere.



DRAFTING SKIRT FRONT—Cut No. 6.

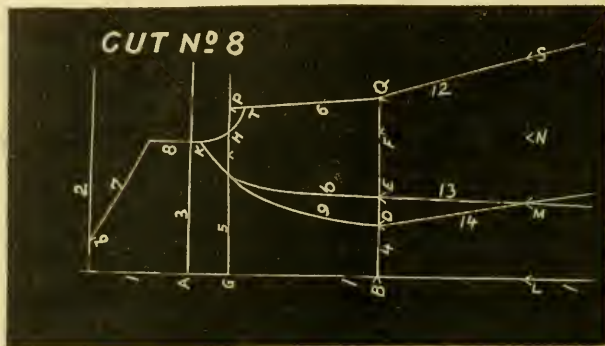
In drafting skirts, draft on lining double. Cut 6 represents the front gore, and should be drafted from the fold of lining.

1. Draw line 1 one inch from top of lining square.
2. Make dot A on line 1, one inch and a half from edge of lining.
3. Make dot B two inches and a fourth from edge of lining.
4. Make dot C three inches from edge of lining.
5. Make dot D one-fourth of "Waist Measure" from edge of lining.
6. Make dot E one-half inch inside of dot D.
7. Make dot F on edge of lining six inches below line 1.
8. Draw line 2 from dot F square across lining.
9. Make dot G on line 2 one inch further from edge of lining than dot D.
10. Draw line 3 from dot B square down to line 2.
11. Place the E point at dot E and draw line 4 to dot G.
12. Draw line 5 in same manner from dot A.
13. Turn System over, and draw line 6 in same manner from dot C.
14. Make dot H on edge of lining one-fourth inch below line 1.
15. Place the F point at dot H and draw line 7 to dot E.
16. Draw line 8 from dot D, straight across dot G, away down.
17. Make dot J on edge of lining, "Front Skirt Measure," below dot H.
18. Make dot K, on line 8, "Front Skirt Measure" below dot D.
19. Place the E point at dot K and draw line 9 to dot J.
20. Trace line 7 to dot E, down line 4 and 8 and the dart.



DRAFTING SIDE GORE OF SKIRT—Cut No. 7.

1. Draw line 1 same as in front.
2. Make dot A on line 1 one inch more than one-fourth of "Waist Measure" from edge of lining.
3. Make dot B on line 1, half way between edge of lining and dot A.
4. Make dot C one inch outside of dot B.
5. Make dot D one inch inside of dot B.
6. Make dot E on line 1 one-half inch from edge of lining.
7. Make dot F on edge of lining six inches below line 1.
8. Draw line 2 from dot F square across lining.
9. Make dot G on line 2 one inch further from edge of lining than dot A.
10. Draw line 3 from dot B, square down to line 2.
11. Place the B point at D, and draw line 4 to line 2.
12. Turn the System over, place the B point at dot C, and draw line 5 to line 2.
13. Place the E point at dot E and draw line 6 to dot F.
14. Draw line 7 from top of lining across dots A and G away down.
15. Make dot H on line 7, one fourth of an inch above dot A.
16. Place the F point at dot H and draw line 8 to dot C.
17. Make dot J on edge of lining "Front Skirt Measure" below line 1.
18. Make dot K, on line 7, half inch more than "Front Skirt Measure" below dot H.
19. Place the E point at dot K, and draw line 9 to dot J.
20. Trace the dart and outlines as in front, always allowing seam outside your tracing.
21. For "Back Skirt," a plain width from 25 to 35 inches wide should be added. This gives a good width for walking length; if more fullness is desired, add more plain goods in back.

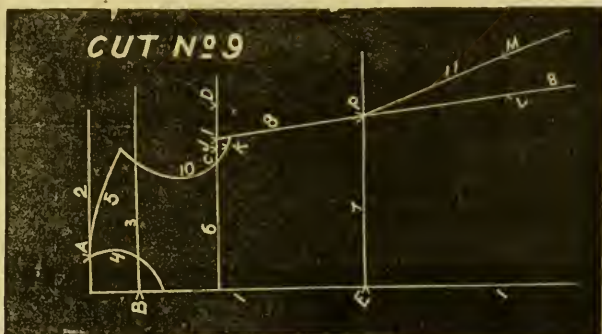


DRAFTING FOR CHILDREN—Cut No. 8,

1. Draw lines 1 and 2 and make dot A four inches below line 2.
2. Draw line 3 from dot A.
3. Make dot B the back measure below line 2.
4. Draw line 4 from dot B.
5. Make dot D two inches from dot B.
6. Make dot E three and a fourth inches from dot B.
7. Make dot F according to Waist Measure.
8. Make dot G the the Under-arm Measure.
9. Draw line 5 from dot G.
10. Make dot H on line 5 according to bust measure.
11. Turn small end up, place the square corner at dot H, and make dot P, on line 5, two measures less than Arm's Eye Measure, using arm eye figures.
12. Place the square corner at dot F and make dot Q on line 4 in same manner.
13. Draw line 6 from dot P to dot Q.
14. Make dot T on line 6 half an inch below dot P.
15. Make dot J and draw line 7.
16. Place the S point at dot T and draw line 8 from dot T to the lowest end of line 7.
17. Place the arm's eye measure in back arm shape figures at the lowest end of line 7, and make dot K on line 8 two measures less than arm's eye.
18. Draw lines 9 and 10.
19. Make dot L six inches below dot B.
20. Make dot M three inches from dot L.
21. Make dot N according to "Waist Measure," using back waist figures.
22. Make dot S three and a fourth inches outside of dot N.
23. Draw lines 12, 13 and 14. See instructions "Open Back Garments," below.

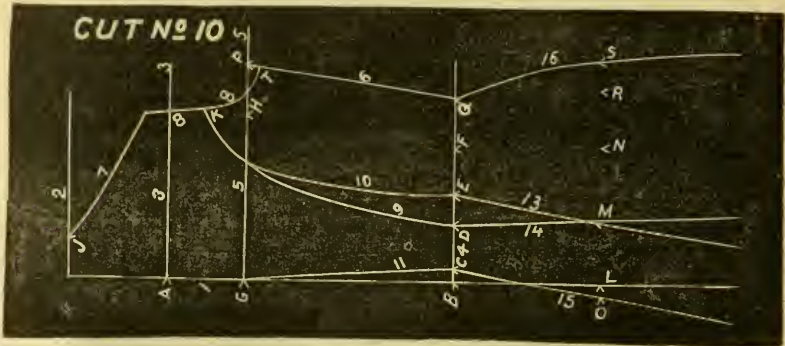
OPEN BACK GARMENTS.

If dress is to open in the back, allow lap in back and make dot A in the front three measures less than "Neck Measure," or three-eighths of an inch less than "Neck Measure," and draw line 4 to one measure less than "Neck Measure.



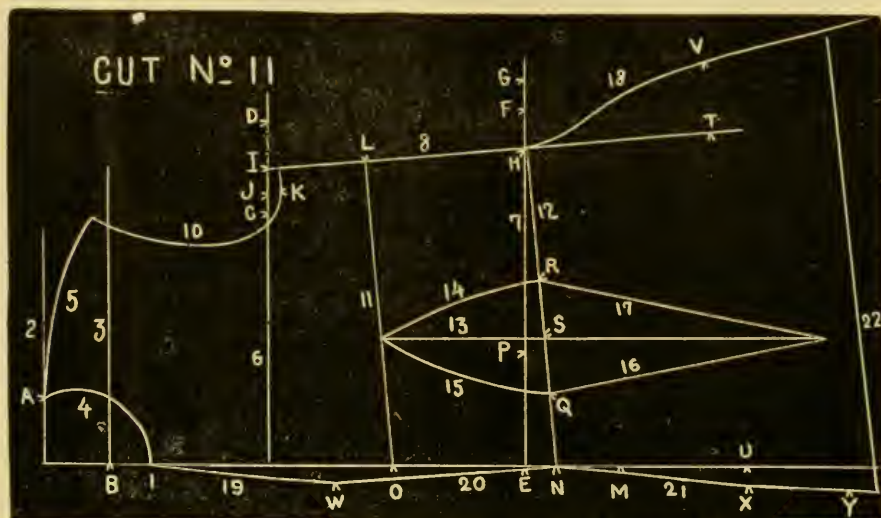
DRAFTING FOR CHILDREN.—Cut No. 9.

1. Draw lines 1 and 2 and make dots A and B.
2. Draw line 3 from dot B.
3. Draw lines 4 and 5.
4. Make dot C half of "Arm's Eye Measure" below the lowest end of line 5.
5. Draw line 6 across dot C.
6. Make dot D on line 6 according to "Bust Measure.
7. Make dot E "Under Arm Measure below line 6.
8. Draw line 7 from dot E.
9. Measure back drafting from dot B to dot D, then from dot E to dot Q, then with small end from you, place this amount at dot E in front drafting, and make dot P just half of "Waist Measure.
10. With small end down place the square corner at dot D and make dot I on line 6 two measures less than "Arm's Eye Measure."
11. Make dot J according to "Arm's Eye Measure," from dot D.
12. Make dot K three eights of an inch below dot J.
13. Draw line 8 from dot I across dot P.
14. Place the "Arm's Eye Measure" at dot K and draw line 10 from line 8 to the lowest end of line 5-
15. Make dot L on line 8 six inches below dot P.
16. Make dot M one and a half inches outside of dot L.
17. Draw line 11 from dot P across dot M.



DRAFTING—Tailor Cut No. 10.

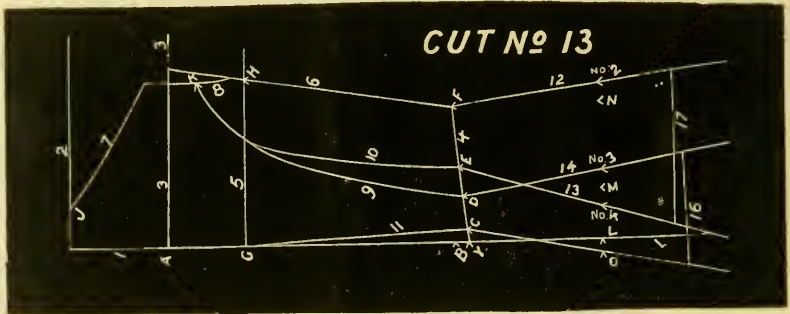
1. Draw lines 1 and 2 and make dot A four inches below line 2
2. Draw line 3 from dot A.
3. Make dot B the back measure below line 2.
4. Draw line 4 from dot B.
5. Make dot C half of an inch from dot B.
6. Make dot D two and a fourth inches from dot B.
7. Make dot E three and a half inches from dot B.
8. Make dot F according to waist measure.
8. Make dot G "under arm measure "
10. Draw line 5 from dot G.
11. Make dot H, on line 5, according to bust measure.
12. Turn small end up, place the square corner at dot H, and make dot P, on line 5, two measures less than arm eye measure, using arm eye figures.
13. Place the square corner at dot F and make dot Q, on line 4, in same manner
14. Draw line 6 from dot P to dot Q,
15. Make dot T, on line 6, half an inch below dot P.
16. Make dot J and draw line 7.
17. Place the S point at dot T and draw line 8 from dot T to the lowest end of line 7, then place the arm eye measure in back arm shape figures at the lowest end of line 7, and make dot K, on line 8, two measures less than arm eye measure, using small figures.
18. Draw lines 9, 10 and 11.
19. Make dot L six inches below dot B.
20. Make dot M two and a half inches inside of dot L.
21. Make dot N according to "Waist Measure."
22. Make dot O half an inch outside of dot L.
23. Draw lines 13, 14 and 15 as cut shows.
24. Place the square corner at dot N and make dot R two measures less than "Arm's Eye Measure, using arm eye figures.
25. Make dot S one and a half inches outside of dot R.
26. Place the A point at dot Q and draw line 16 across dot S.



DRAFTING—Tailor Cut No. II.

1. Draw lines 1 and 2 and make dots A and B.
2. Draw line 3 from dot B.
3. Draw lines 4 and 5.
4. Make dot C half of "Arm's Eye Measure" below the lowest end of line 5.
5. Draw line 6 across dot C.
6. Make dot D on line 6 according to "Bust Measure."
7. Make dot E, "Under Arm Measure" below line 6.
8. Draw line 7 from dot E.
9. Make dot F on line 7 according to "Bust Measure."
10. Make dot G half inch outside of dot F.
11. With small end down, square corner at dot G, make dot H on line 7, two measures less than "Arm's Eye Measure," using arm's eye figures.
12. With square corner at dot D, make dot I in same manner.
13. Make dot J according to "Arm's Eye Measure," from dot D.
14. Make dot K three-eighths of an inch below dot J.
15. Draw line 8 from dot I across dot H.
16. Make dot L three inches below dot I.
17. Make dot M on line 1 the "Front Measure" below dot A.
18. With "Curvature," place the "Neck Measure" in back neck figure's at dot M, and make dot N at the T point.
19. Place the "Arm's Eye Measure" at dot K, and draw line 10 from line 8 to line 5.
20. Make dot O on line 1 four inches below line 6.
21. Draw lines 11 and 12.
22. Measure waist in back drafting, then measure from dot H and make dot P on line 7 half of "Waist Measure."
23. Make dot Q on line 12 two inches from dot N.
24. Make dot R the same distance from Q that P is from E.

25. Make dot S half way between dots Q and R.
26. Draw line 13 square down across dot S.
27. With Curvature, place the Y point at the junction of lines 11 and 13, and draw line 14 to dot R.
28. Turn Curvature over and draw line 15 in same manner.
29. Make a dot on line 13 nine inches below dot S, and draw lines 16 and 17 to dot just made.
30. Make dot T on line 8 six inches below dot H.
31. Make dot U on line 1 six inches below dot N.
32. Measure "Back Drafting" from dot O to dot S, then from dot U in front, straight out across dot T, and make dot V one inch more than half of "Hip Measure."
33. Dot V must never be less than one and a half inches outside of line 8.
34. Place the A point at dot H and draw line 18 across dot V.
35. Make dot W two inches above dot O, and a half inch outside of line 1.
36. Draw lines 19 and 20.
37. Make dot X half inch outside of dot U.
38. Make dot Y ten inches below dot U, and one inch outside of line 1.
39. Draw line 21 from dot N across dots X and Y.



1. This Cut. No. 13, shows the result of swaying in centre of back, and the dividing up of the "Hip Measure."
2. Lines 12, 13, and 14 in back drafting should not be drawn until you have made dots No. 2, 3 and 4. See Instructions on page 19, in the Variations.

LEG 'O MUTTON SLEEVE.

After you have drawn line 4, make dot No. 1 three inches outside of dot D.

Make dot No. 2 two inches outside of dot A

Make dot No. 3 one and a fourth inches above dot No. 2.

Place the J point at dot No. 1 and draw a line to dot No. 3

Place the H point at dot No. 3, and draw a line to the junction of lines 3 and 4.

This gives three inches looseness ; if you wish more make dot No. 1 further out.

VARIATIONS IN DRAFTING BACK.

1. The back needs swaying at the waist, to keep it from appearing short in center of back. To do this, make dot F according to waist measure before you draw line 4, then make dot Y half an inch below dot B, and draw line 4 from dot Y to dot F, then make dots, C, D and E as usual.

2. To divide up the Hip measure when you have made dot Z: If it comes a half an inch outside of line 8 and not more than two inches, draw line 25 across dot Z. But if it goes more than two inches outside of line 8, make a new dot Z one inch outside of line 8, then measure the distance between the two dots Z; now make dot No. 1 just one-fourth of this distance outside of the new dot Z, and draw line 25 across dot No. 1; now make dot No. 2 in back drafting the same distance outside of dot N, make dot No. 3 the same distance from dot M towards dot N; make dot No. 4 the same distance from dot M towards dot L, draw line 12 across dot No. 2 draw line 13 across dot No. 4, draw line 14 across dot No. 3.

3. In drawing line 8 in back drafting when the W point goes below dot H, push the large end of Curvature from you until you see dot H, then draw line 8 to dot H.

4. When a lady is 40-inch bust or more, in drawing line 9 the J point should be placed at dot K, instead of the K point, and the L point for children.

5. When waist measure is 30 inches or more, dots D, E and M should be made one-fourth of an inch more than instructions.

6. Where ladies wear no busle at all, dot O should be made one-fourth of an inch less than instructions.

7. For a polonaise or cloak or any long garment, lines 13 and 14 should be curved; if dots No. 3 and 4 are as much as one inch apart, place the D point at dot D and draw line 14 across dot No 3; turn System over, place the D point at dot E and draw line 13 across dot No 4. If dots Nos. 3 and 4 are further apart, curve lines 13 and 14 more.

8. Line 10 in Tailor Cut should run in line 9 half an inch below line 5.

9. If you are drafting by the Tailor Cut and dot V goes more than two inches outside of line 8, make a new dot V just two inches outside of line 8, and draw line 18 across the new dot; now measure the distance between the two dots V and make dot No 1 in the back drafting just one-half of this amount from dot M towards dot L; make dot No. 2 the same distance from dot M towards dot N, draw line 13 across dot No 1, draw line 14 across dot No. 2

VARIATIONS IN DRAFTING FRONT.

1. When a lady is not inclined to be full stomached, line 28 should not be drawn at all, and make dot W only one and a fourth inch from line 9.

2. When "Waist Measure" is 28 inches or more, dot Q should be made two inches from dot N, and dot T one inch from dot R.

3. Cuts Nos. 10 and 11 make a beautiful garment for ladies with 23-inch waist measure or less, or for loose fitting garments when waist measure is 24 inches or less.

4. It is not recommended for large ladies, as there are not seams enough. If you prefer two darts, take them out according to Instructions in Cut 4.

Bust.....	36	37
Waist.....	24	25½
Neck.....	12	13
Arm's Eye.....	11	12
Shoulder.....	6	6
Back.....	15¾	15¾
Front.....	18¼	18¼
Under Arm.....	8½	8
Hip.....	44	46
Arm to Elbow.....	14	14½
Arm.....	22	22½
Elbow.....	10½	11½
Hand.....	8	9

CLOSE FITTING CLOAKS.

Before commencing to draft a cloak, add to your measures as the above measure shows, then draft same as Cuts Nos. 2 and 4, or as Cuts Nos. 10 and 11 are drafted. For waist measuring 22 inches or less, Cuts 10 and 11 make a beautiful cloak, as it is cut only in six pieces. If waist measure is more than 23 inches, it is best to draft by cuts Nos. 2 and 4. Take out all you have for darts in one dart, make dot Q two inches from dot N. And dot R the size of dart from dot Q. For double-breasted garments, see "Double-Breasted Garments," page 21.

LOOSE FITTING CLOAKS.

Add two and a half or three inches to waist measure and the other measures, the same as the above measure shows; if waist measure is 25 inches or less, draft by Cuts 10 and 11; if more, by Cuts Nos. 2 and 4.

CLOAKS WITHOUT DART.

Draft the same as for close fitting cloaks, except you make dot G in front drafting a half inch inside of dot N; lines 27 and 28 are drawn to dot G, instead of dot N, and line 8 across dot F. If Tailor Cut across dot H.

UNDER ARM DART.

To run under arm seam out below waist as dart, cut your lining off exactly six inches below waist line, or make a mark six inches below waist. After basting front linings on goods as usual, place the "Side Front" back of front just far enough for tracings to come together six inches below waist line; be sure to keep "Side Front" straight with the goods. If dress is not lined, trace out a pattern of "Side Front" with six inch skirt, then place front "drafting" on goods, and the "Side Front" pattern the same as with lining.

DOUBLE BREASTED GARMENTS,

1. Draw line 1 three inches from edge of paper, then draft the same as instructions for Cut No. 4, until you have drawn line 25.
2. Make a dot outside of dot B, just half the amount you want garment to lap.
3. Make another dot the same distance outside of dot N.
4. Draw line 31 across the two dots just made.
5. Make dot AA half inch outside of line 31, and two inches above dot O.
6. Continue line 4 out to line 31; line 4 may be drawn square or inclined up.
7. Draw lines 26, 27 and 28 outside of line 31.
8. Lines 26, 27 and 28 should be omitted for children.

LOOSE FITTING GARMENTS.

Add to "Waist Measure" one or one and a half inches. Then draft the same as in Cuts No. 2 and No. 4, or as in Cuts Nos. 10 and 11.

SACQUES.

If sacques are for an over-garment, add to measures the same as for loose fitting cloak; if not an over-garment, add measures the same as loose fitting garments, and draft the same as Cuts Nos. 2 and 4, or as Cuts 10 and 11.

DRAFTING FOR MISSES.

Draft the same as for adults, with the following exceptions:

1. When "Front" drafting is done, place the D point at dot W, with small end down, and draw a line from dot H to dot W.
 2. Turn the System over and draw a line from dot H to dot X.
- For open back garment, see "Open Back Garments," page 14.

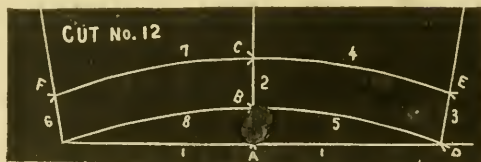
DRAFTING YOKES.

Draft by Cuts 10 and 11. After draftings are drawn, make a dot on line 1 (in Cut 10) one and a half inches below line 5, and another on line 16, one and a fourth inches below line 5, and draw a line from one dot to the other; this gives the "Back Yoke."

For "Front Yoke" make a dot on line 1, (Cut 11) two and a fourth inches below line 6, and another on line 8, one and a fourth inches below line 6, and draw line from one dot to another; this gives a plain, square yoke.

If you desire pointed or curved yoke, make a dot at the point you want yoke to run into arm-hole, and another on line 20 in front, and line 1 in back, the depth you wish yoke to come, and draw a straight or curved line from one dot to the other.

In tracing, trace yoke first then the waist part below yoke, allowing seam outside of tracing, where yoke and waist join. If you wish goods plaited into yoke, plait it before tracing, if for pointed or curved yoke.



DRAFTING COLLAR—Cut No. 12.

1. Draw line 1 half inch from edge of paper.
2. Make dot A on line 1 half of an inch more than half of "Neck Measure" below the end of line 1.
3. Draw line 2 from dot A square across paper.
4. Make dot B on line 2 half of an inch from dot A.
5. Make dot C on line 2, two inches from dot A.
6. Make dot D on line 1, half of an inch more than half of "Neck Measure" below dot A.
7. With straight edge of System on dot B, and square corner at dot D, draw line 3 from dot D.
8. Make dot E on line 3, one inch and a half from dot D.
9. Place the D point at dot C and draw line 4 from dot C to dot E.
10. Draw line 5 in same manner.
11. With small end from you, place the large end of System on dot B, and the square corner at the end of line 1, then draw line 6 from the end of line 1.
12. Make dot F on line 6, one and a half inches from the end of line 1.
13. Turn System over, place the D point at dot C, and draw line 7 to dot F.
14. Draw line 8 in same manner.
15. Trace collar out—allow seams everywhere.

TO CARRY DOWN SKIRT.

In carrying down skirt for Princess dress or wrappers, run line 28 down the "Front Skirt Measure" below dot N, and line 23 one half inch longer than "Front Skirt Measure." Now, with System small end from you, place the D point at the dot on line 23, and draw line 29, to the dot on line 28. For under arm gore, run lines 24 and 25 down the same length of line 23, and draw line 30 same as line 29.

In back, run line 12 down the same as line 25 in front. Now run line 15 (this is the center of back) down the length of "Back Skirt Measure" below dot C, then run lines 13 and 14 down to graduate the difference between the length of lines 12 and 15.

Extra fullness should be allowed in back skirt by throwing lines 12 and 15 out, or allow plaits in center or side back seams.

As to style, ladies must consult the fashion books.

TO PERSONS OUT OF EMPLOYMENT.

EITHER LADIES OR GENTLEMEN.

We will give you employment, either at your homes or as traveling agents. Our inducements to agents are liberal and profits good, for we believe agents should have the profits of their labor.

The "Fountain System" is undoubtedly the best system of dress cutting ever invented, and is a system which should go into every well regulated household. In handling an article of so great necessity as this, agents have the advantage over those worrying their lives out trying to sell a trivial article which no one can see advantage in buying; but with a good system of dress cutting, every lady will agree at once it is something she ought to possess, and it only remains for you to prove its merits. We speak from years of experience, and in handling "The Fountain Tailor System" this is easily done, for it speaks and recommends itself. It is so perfect in all its principles and correct in all its teachings, that persons do not have to be skilled or practical to use it with perfect results.

If you are in want of employment, write us at once and get our price list and terms to agents.

Address

J. H. FOUNTAIN & CO.,
621 Locust St., St. Louis, Mo.

TO MOTHERS.

The subject of Garment Cutting is a very important one, and one which all ladies, especially mothers, should feel greatly interested in.

We believe it the duty of every mother, to see that her daughters understand some good system of dress cutting, and sufficiently educated in this branch of their domestic education as to enable them to at least superintend, if not to cut and make their own and their children's dresses. Mothers can not but be proud of the daughter who can cut and make her own clothing, and they will certainly agree with us, that they will make better wives and mothers by having this knowledge, besides, in many cases, it might prove to be a great blessing, for many poor girls are thrown out upon this cold world without a mother's council and protection, with nothing but their own resources to depend upon for support. Then fortunate and happy is she who has some accomplishment and knowledge which she can turn to good account—and skilled dress cutters are always in demand, and at all times command good wages. Then what better trade or means of self support can a mother give her daughter?

ADVICE AND INSTRUCTIONS TO AGENTS.

Agents should give the business their entire attention, study to please and to give perfect satisfaction to their patrons. In selling an article on which instructions are to be given, agents should study to improve, and never feel satisfied with themselves until they become masters of their profession, for we can not teach to others that which we do not know ourselves. Be courteous, deal honestly, "Do unto others as you would they should do unto you," and you will succeed.

Agents, for many reasons, should always teach their pupils to draft from the printed measure. One reason is because the drafting made to this measure will be exactly like Cuts No. 2 and No. 4, and will not confuse; and when pupil can draft to this measure perfectly, take her measure and have her draft to this, her own measure, by herself—for a test. Inspect her drafting. If correct, have her to trace out and baste a dress for herself under your instructions, for it is absolutely necessary to know how to baste.

In ordering goods, it is best to accompany order with money. In so doing, you will save charges on return of money for goods sent C. O. D. In ordering goods C. O. D., at least \$2.00 must accompany the order.

In writing to us, please sign your name and address plainly. If lady, sign "Miss," or "Mrs." as the case may be.

RETAIL PRICE LIST.

One system complete, with instruction book.....	\$ 5 00
One system complete, with instruction book and lessons.....	10 00
One tracing wheel, "best steel".....	50
One tape measure, "double sateen".....	50
One tape measure, "double twilled".....	25
Drafting paper, "Manila," per quire.....	25
Instruction book.....	50
Measure book (containing 444 printed measures).....	50

Any of the above articles (except paper) sent post-paid, to any address, on receipt of price. In ordering instruction book, you should mention the number of your System. Money may be sent by Post Office Order, Registered Letter or draft.



Mdme McCabes
CORSET
WAIST
No. 4.

This Waist is pronounced by all who examined it the **HANDSOMEST** and most **Perfect Made**. It meets all the require-

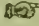
ments of a **REFORM WAIST** with the advantage of having a shape equal to the most approved style of corset, thus insuring at the same time **NEATNESS** and **COMFORT**. It is provided on side with skirt suspenders, giving simple and convenient means of relieving the waist of pressure caused by tightening of waist bands of clothing ordinarily necessary to keep skirts in place.

Any lady wearing this style of garment, will certainly be pleased with the **No. 4.**

Made of Fine Buff Sateen Jean. Clasp Front
PRICE \$1.50.

Mme. McCABE'S
Sanative CORSETS.

Perfect Fitting, comfortable, durable, Side Flexible and **ABSOLUTELY UNBREAKABLE.** Back Self-Adjusting. Construction novel, giving neat and graceful figure.

Dress Makers praise them. A steady stream of enthusiastic testimonials attest their extraordinary popularity.  Goods guaranteed. **PRICE, \$2.00 UPWARD.**

SPECIAL
Inducements
 —TO—
LADY AGENTS.
ST. LOUIS CORSET CO

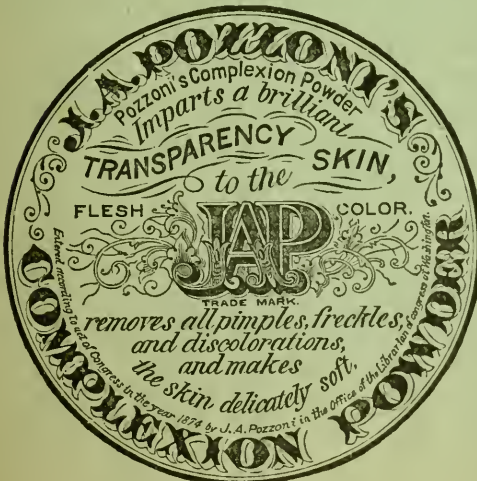
ST. LOUIS, MO.



Ladies Who Value a Refined Complexion

— MUST USE —

POZZONI'S Medicated Complexion Powder.



It imparts a brilliant transparency to the skin. Removes all Pimples, Freckles and Discolorations, and makes the skin delicately soft and beautiful. It contains no lime, white lead or arsenic. In three shades: Pink or Flesh, White and Brunette.

For sale by all Druggists and Fancy Goods Dealers Everywhere, and by E. B. Heimstreet, at N. Y. Drug Store No. 9 Main Street.

USE NO OTHER.

Beware of Imitations!

LIBRARY OF CONGRESS



0 014 061 975 9

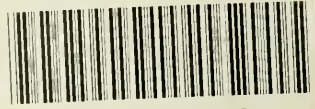
FOUNTAIN'S
TAILOR SYSTEM

— OF —

Dress Cutting.

621 Locust Street, ST. LOUIS, MO.

LIBRARY OF CONGRESS



0 014 061 975 9